

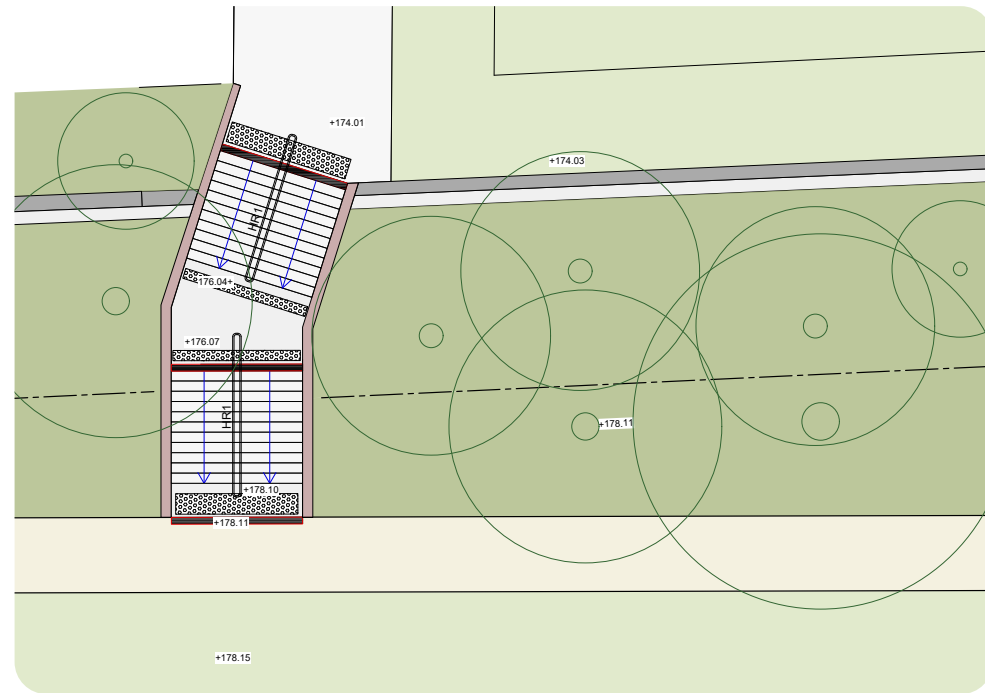
360°

BARKER COLLEGE

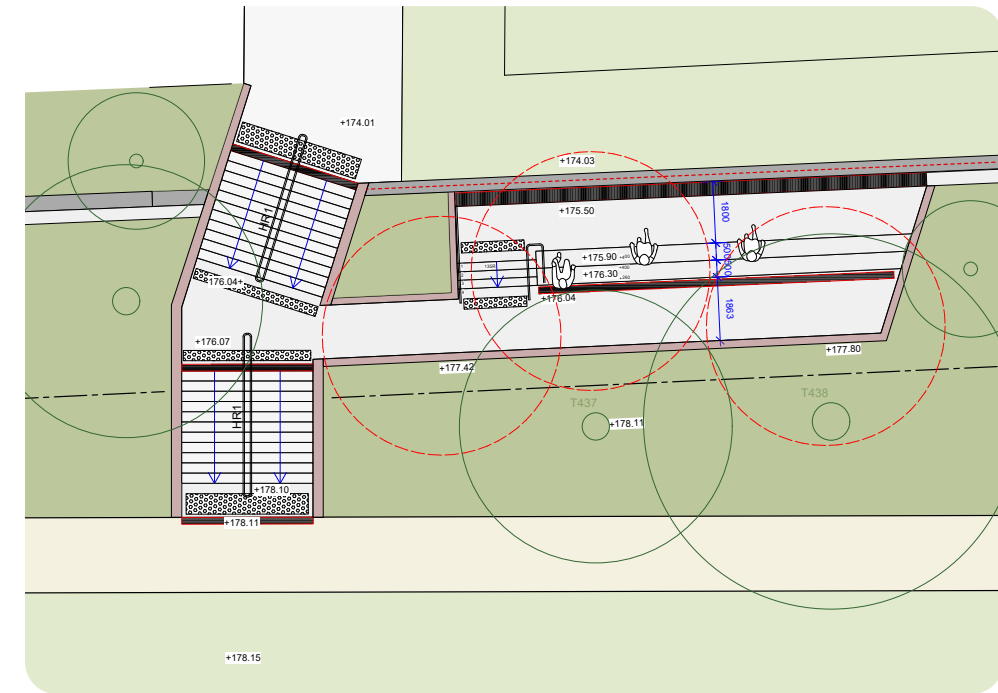
TAYLOR FIELD & JUNIOR SCHOOL STAIR CONCEPTS

REV C | DECEMBER 2024

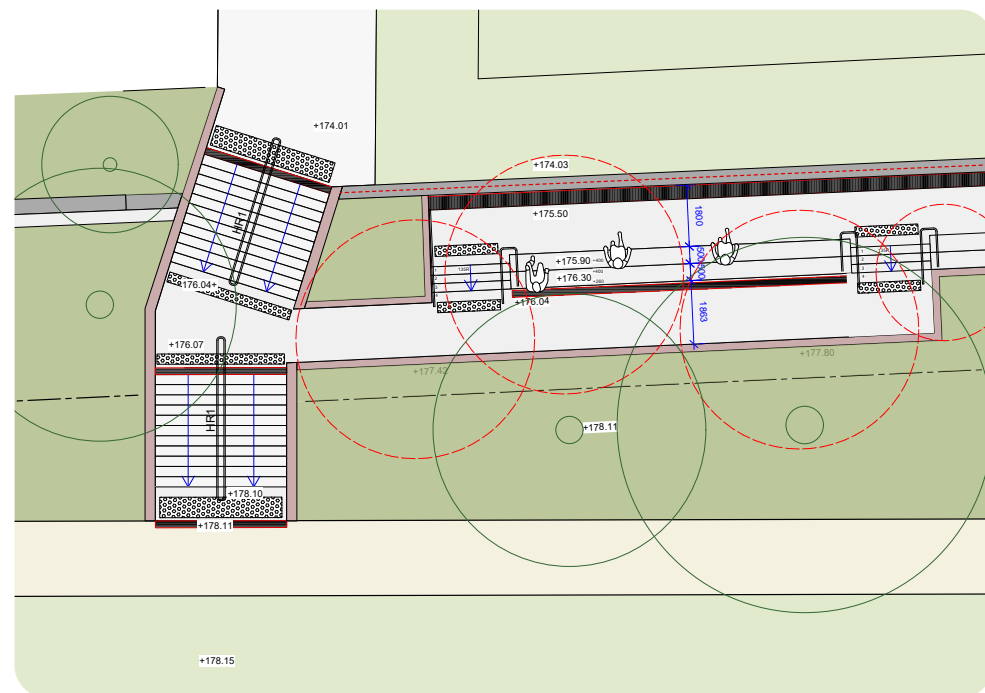
Recap of past options presented



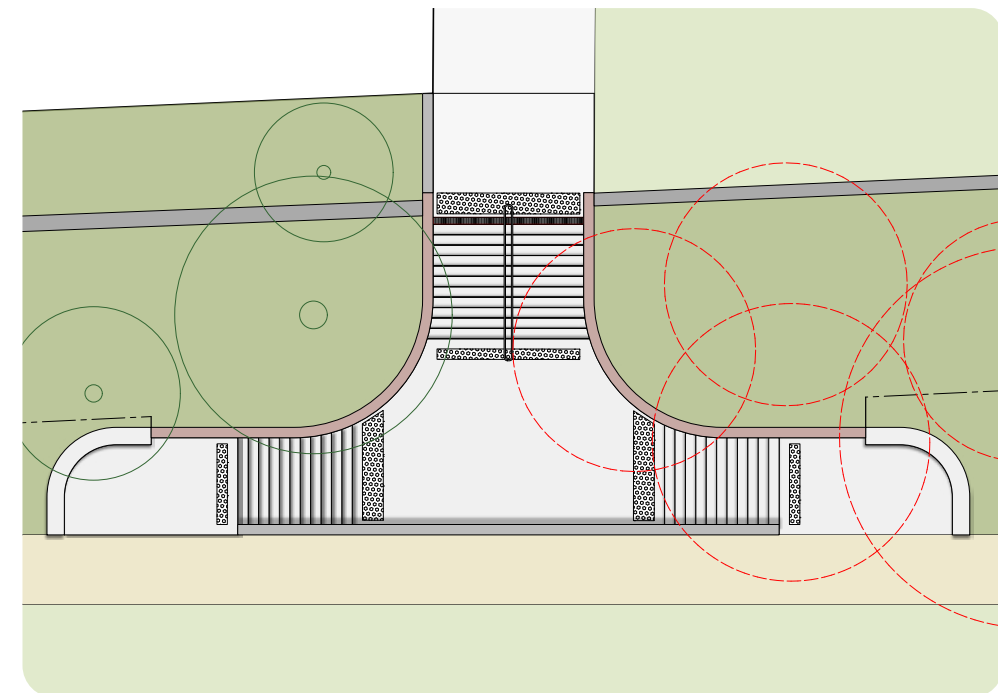
OPTION 1



OPTION 2



OPTION 3



OPTION 4

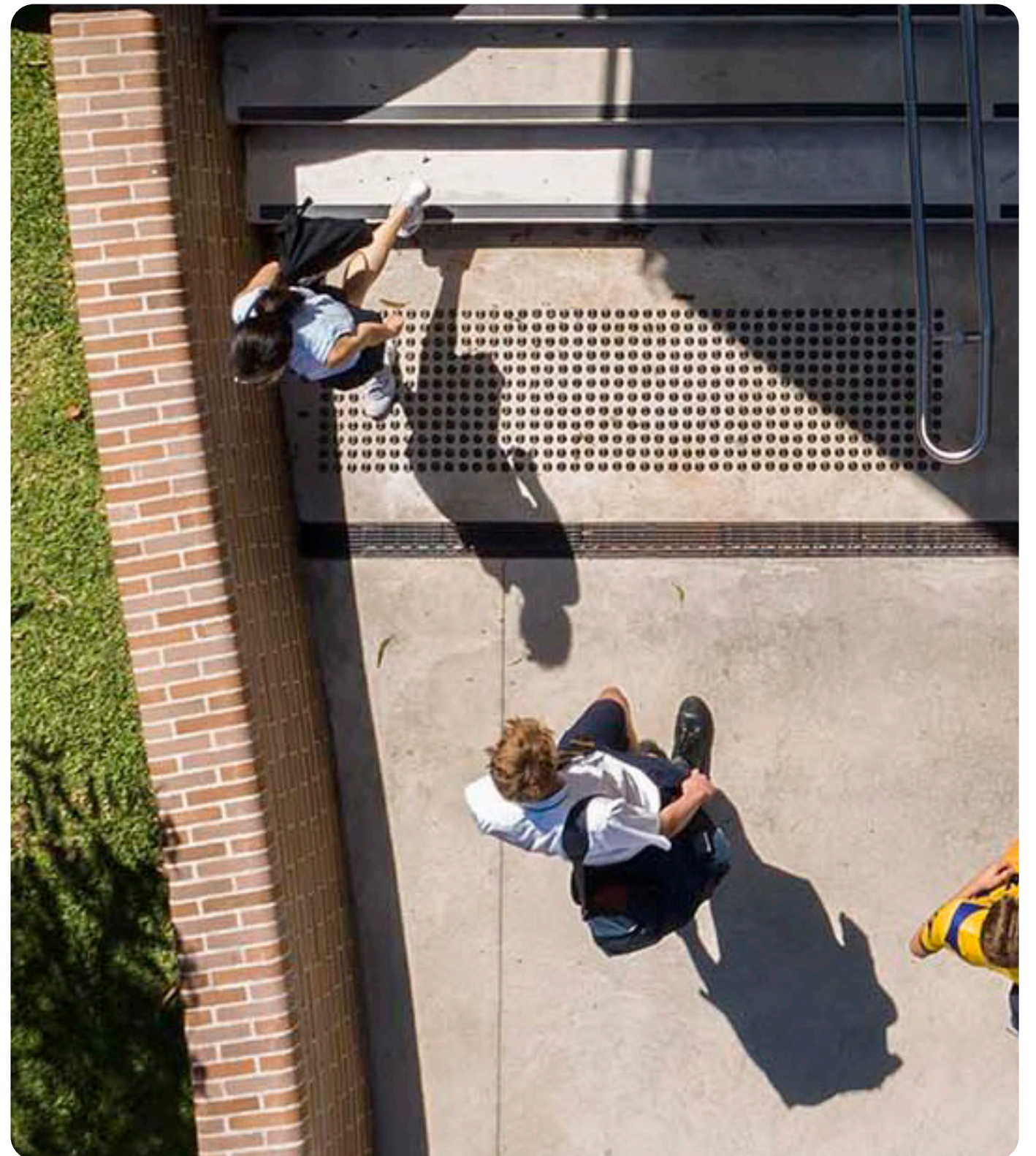
Design Language - Materials and Details



Concrete stairs with curved brick retaining walls, stainless steel handrails to centre




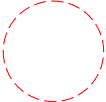
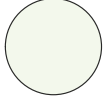



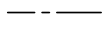
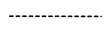
Brick wall detail - curved wall with bullnose brick top

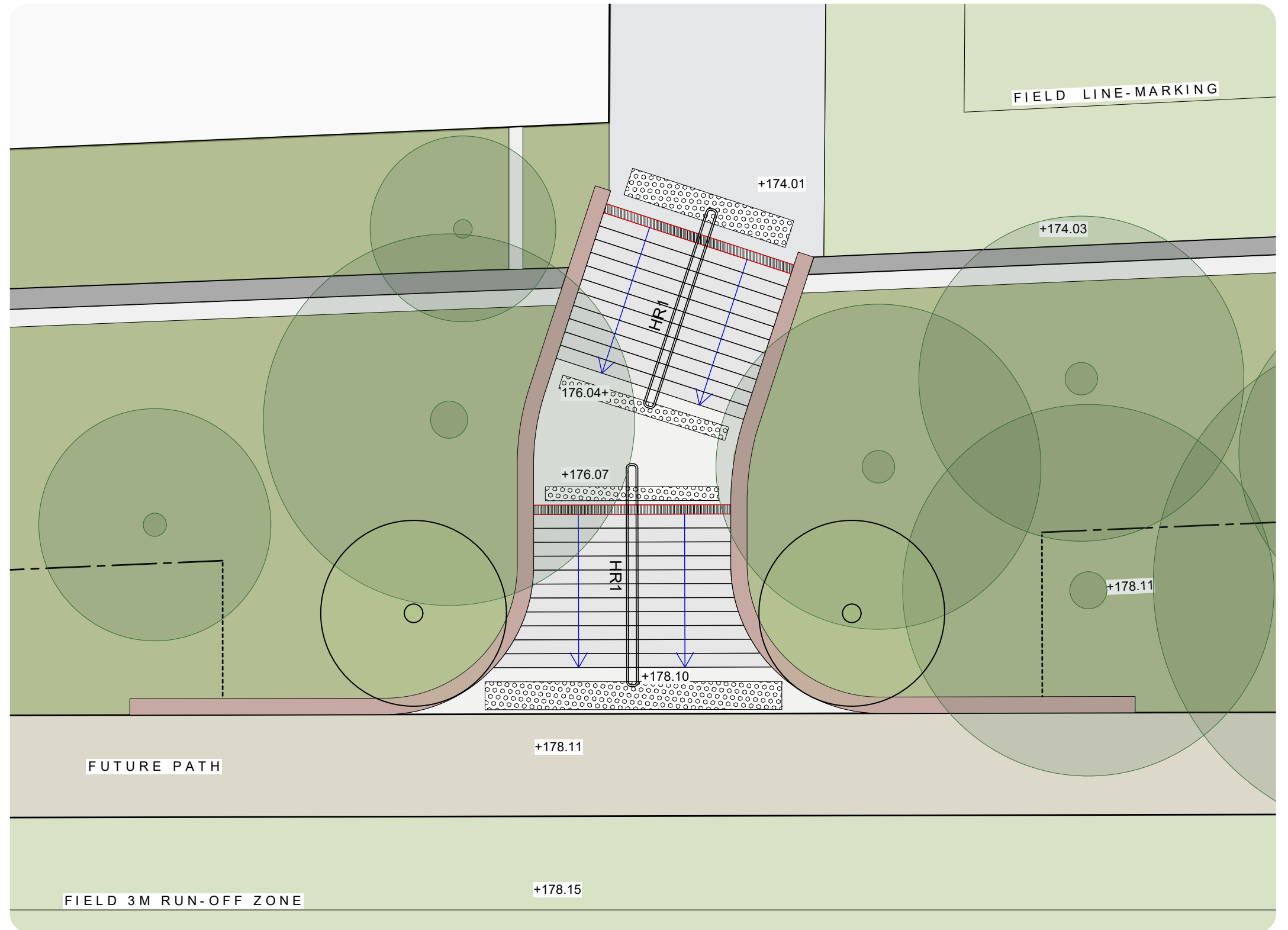


Curved brick retaining wall and concrete stairs

Updated Hybrid Stair Concept Design

KEY

-  Existing tree to be retained
-  Existing tree to be removed
-  Proposed Tree
-  4.25m wide concrete stairs
-  Existing wall
-  New brick wall
-  Existing fence line
-  New fence



Option 1 - View 1



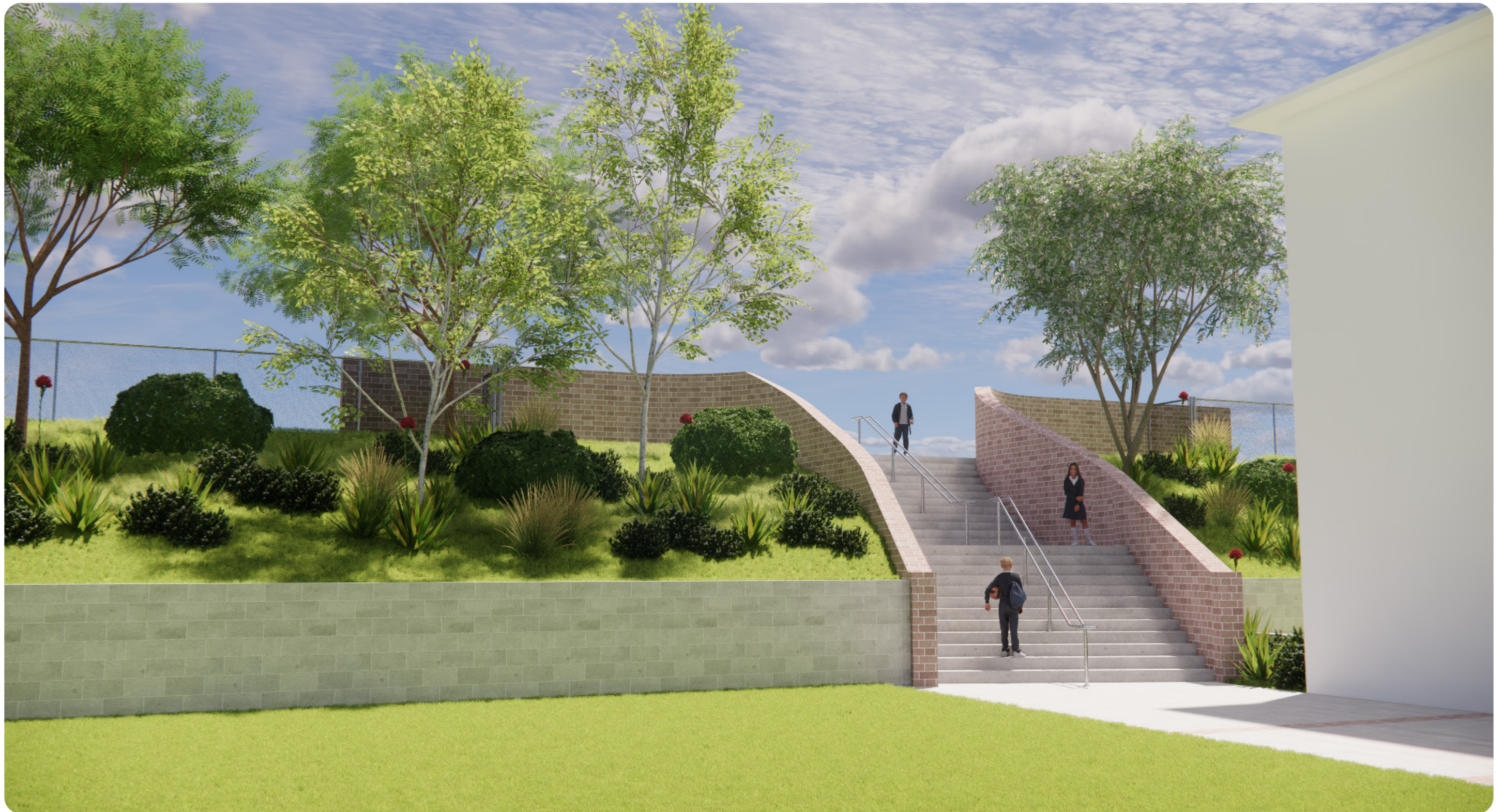
Option 2 - View 1



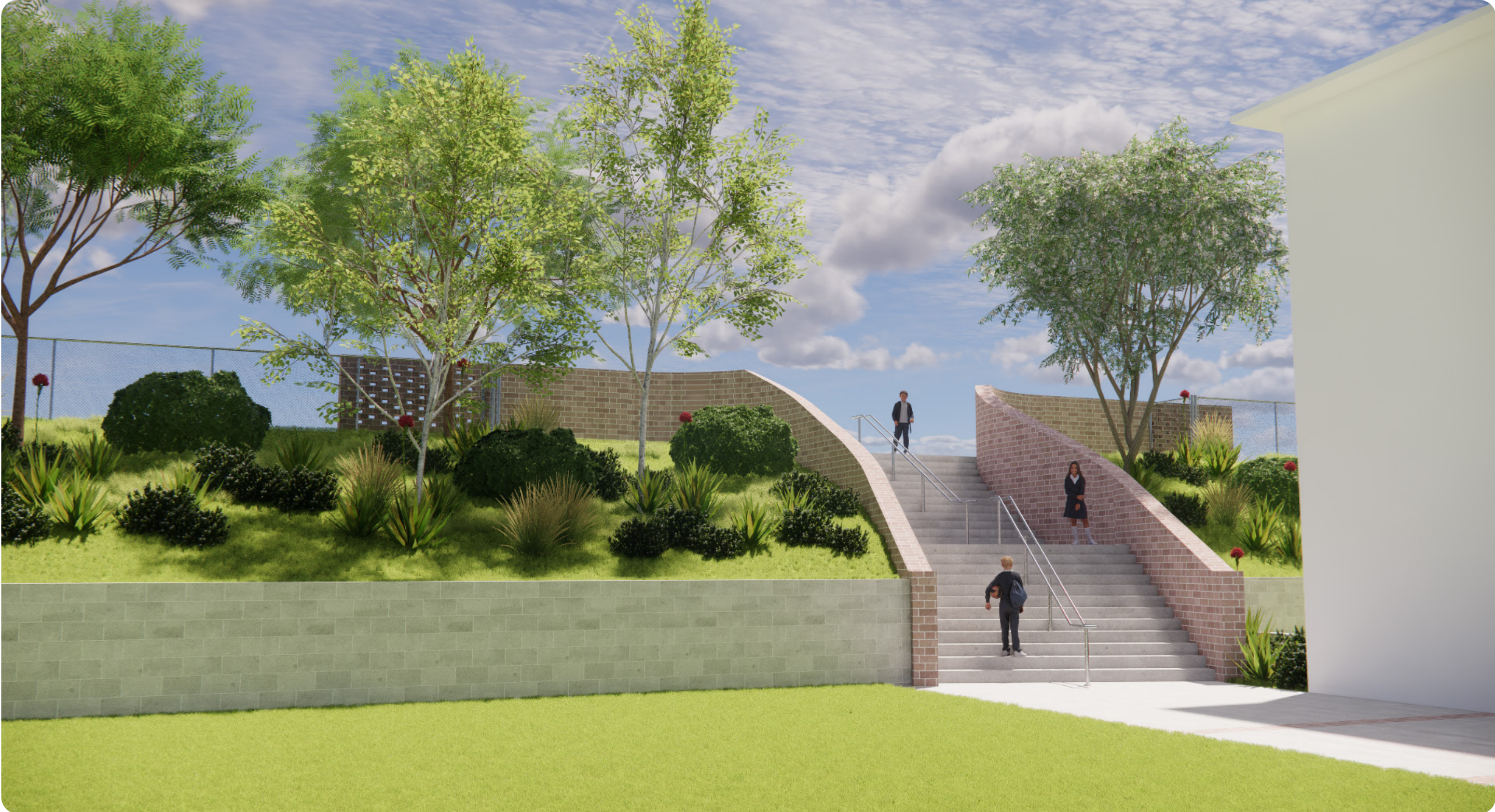
Option 3 - View 1



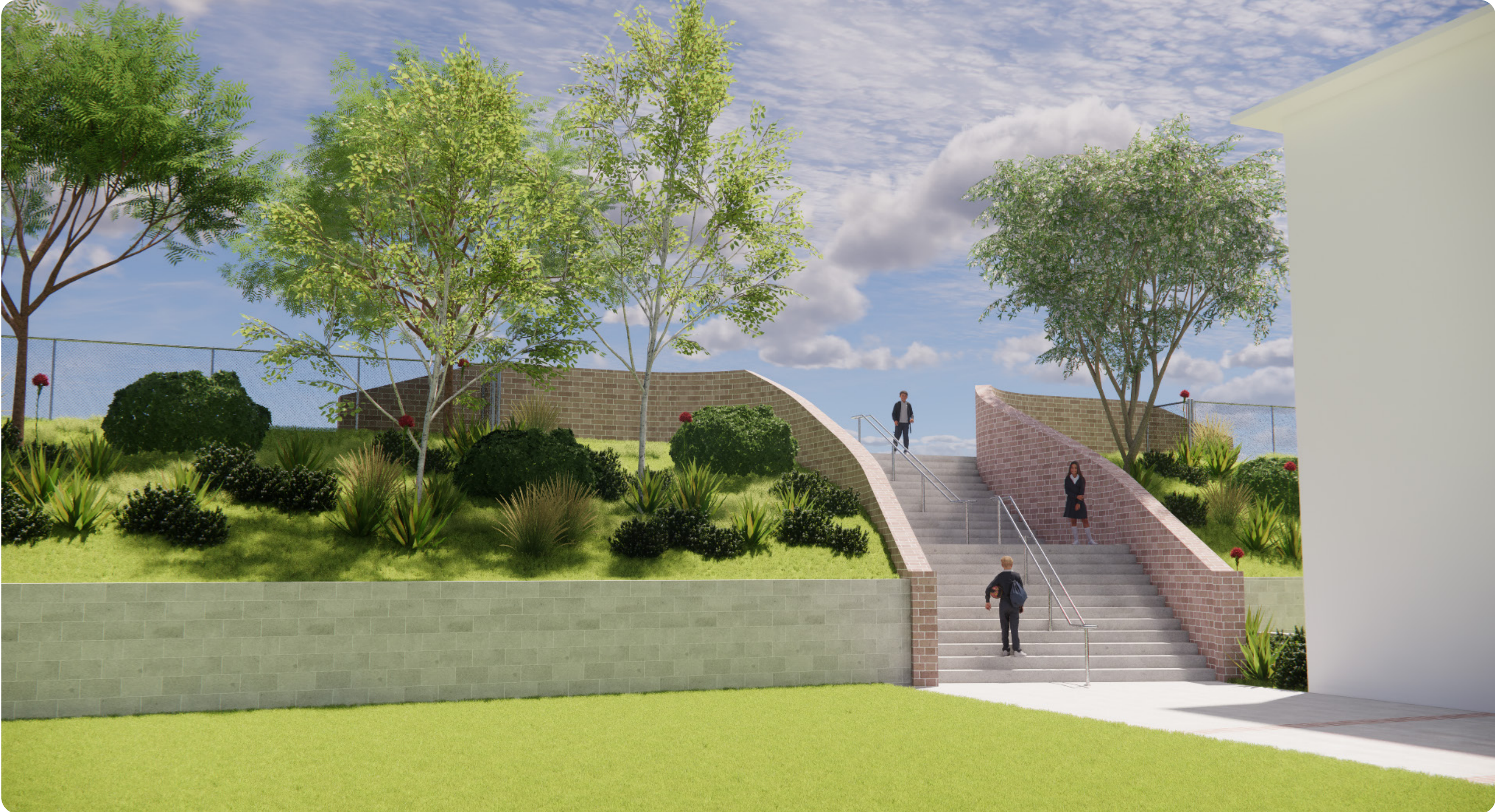
Option 1 - View 2




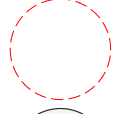
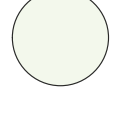



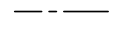
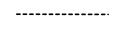

Option 2 - View 2



Option 3 - View 2



Concept + Existing Stair Overlay

- KEY**
-  Existing tree to be retained
 -  Existing tree to be removed
 -  Proposed Tree
 -  4.25m wide concrete stairs
 -  Existing wall
 -  New brick wall
 -  Existing fence line
 -  New fence
 -  Existing stair outline

